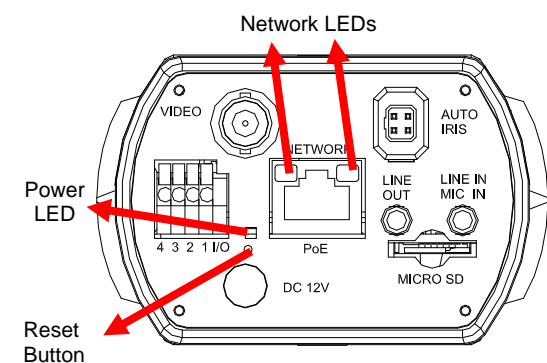


# Full HD Multiple Streaming IP Camera Quick Guide

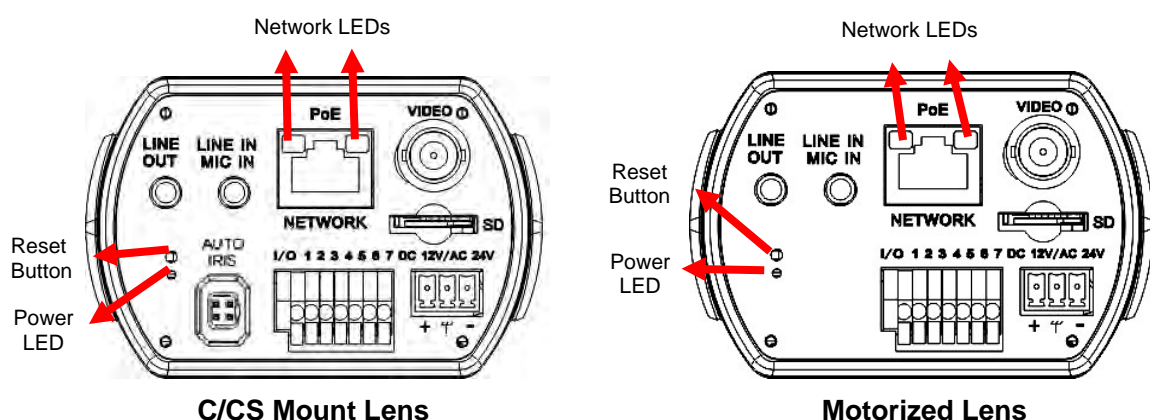
The Quick Guide is for quick installing and connecting the Full HD Multiple Streaming IP Camera. For details, please refer to the IP Camera's User Manual.

## Camera Rear Panel

### DC 12V/ PoE



### DC 12V/ AC 24V/ PoE



Definition	Remarks
LINE OUT & LINE IN / MIC IN	Two-way audio transmission
Power LED	Power connection indication (green light).
Reset button	Reset to factory default
AUTO IRIS connector	Auto iris lens connector
NETWORK (with PoE)	RJ-45 connector
Network LEDs	Network connection and activity indication
I/O	1 Output +
	2 Output -
	3 Input +
	4 Input -
5 GND	
6 D-	
7 D+	
VIDEO (BNC connector)	For video output
Micro SD Card slot	For video and snapshots storage
AC 24V/DC 12V connector (AC 24V Model)	+ AC 24V: Power-1
	⌚ AC 24V: Earth GND
	- AC 24V: Power-2
	DC 12V: Power
	DC 12V: Reserved
	DC 12V: GND

## Lens Mounting

If use C-Mount lens, after removing the camera's plastic cover, users need to mount the supplied C/CS mount adapter to the camera. Then attach the lens onto the C/CS mount adapter.

## IP Camera Installation

Please follow the instructions below to complete IP Camera installation.

## Power up the Camera

To power up the IP Camera, please plug the camera's DC 12V/ AC 24V cable into the power outlet. Alternatively, connect the Ethernet cable to the camera's PoE port and plug the other end of the cable into a PoE switch.



**NOTE:** If using PoE, make sure Power Sourcing Equipment (PSE) is in use in the network.

## Ethernet Cable Connection

Connect one end of the CAT5 Ethernet cable to the RJ-45 connector of the IP Camera, and the other end of the cable to the network switch or PC.



**NOTE:** In some cases, you may need to use an Ethernet crossover cable when connecting the IP Camera directly to the PC.



**NOTE:** Check the status of the link indicator and activity indicator LEDs; if the LEDs are unlit, please check LAN connection.



Green Link Light indicates good network connection.

Orange Activity Light flashes for network activity indication.

## Before Login to the IP Camera

A client program will be automatically installed on your PC when connecting to the IP Camera. Before logging in to the IP Camera, please ensure downloading the ActiveX control is allowed by either changing the ActiveX controls and plug-ins or setting Internet's security level to default. For further details, please refer to the IP Camera's user manual.

ActiveX Controls and Plug-ins Settings	Internet Security Level
<p><b>Step 1:</b> Start the Internet Explorer (IE).</p> <p><b>Step 2:</b> Select &lt;Tools&gt; from the main menu of the browser. Then Click &lt;Internet Options&gt;.</p> <p><b>Step 3:</b> Click the &lt;Security&gt; tab and select "Internet", and click &lt;Custom level&gt; to change ActiveX settings.</p> <p><b>Step 4:</b> Set "ActiveX controls and plug-ins" items to &lt;Prompt&gt; or &lt;Enable&gt;.</p>	<p><b>Step 1:</b> Start the IE.</p> <p><b>Step 2:</b> Select &lt;Tools&gt; from the main menu of the browser. Then Click &lt;Internet Options&gt;.</p> <p><b>Step 3:</b> Click the &lt;Security&gt; tab and select "Internet."</p> <p><b>Step 4:</b> Down the page, press "Default Level" and click "OK" to confirm the setting. Close the browser window, and open a new one later for accessing the IP Camera</p>

## IP Camera Login

The IP Camera's default IP address is: **192.168.0.250**. Therefore, to access the IP Camera for the first time, set the PC's IP address as: 192.168.0.XXX; for example:

**IP Address: 192.168.0.100**

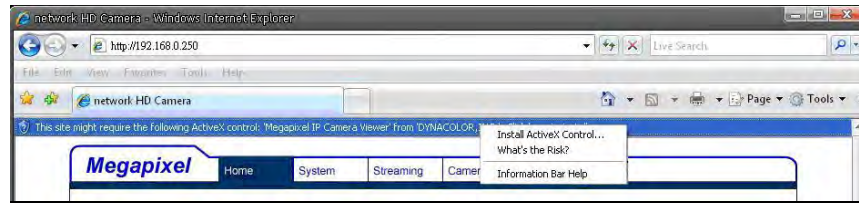
**Subnet Mask: 255.255.255.0**

## Login ID & Password

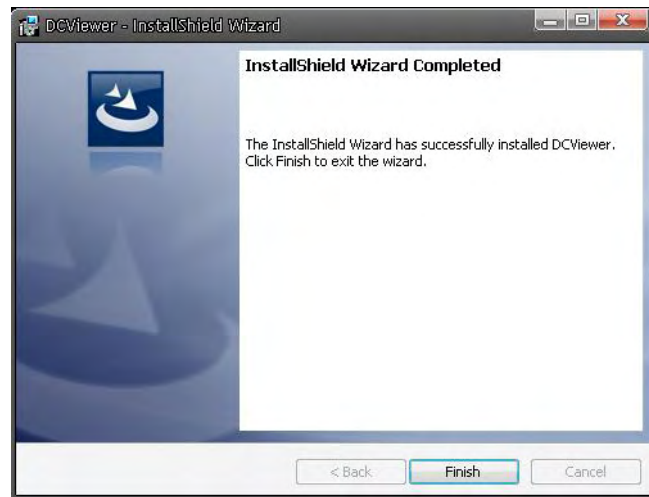
- Key in the IP Camera's IP address in the URL bar of the Web browser window and press "Enter."
- Enter the default user name (**Admin**) and password (**1234**) in the prompt request dialogue. Note that user name is case sensitive.

### Install the ActiveX Control

- After connecting to the IP Camera, the request for installing the ActiveX control will appear just below the URL bar.
- Right Click on the information bar, and press “Install ActiveX Control...” to permit ActiveX control installation.



- In the pop-up security warning window, click “Install” to start downloading DC Viewer software on the PC.
- Press “Finish” after DC Viewer installation is complete.

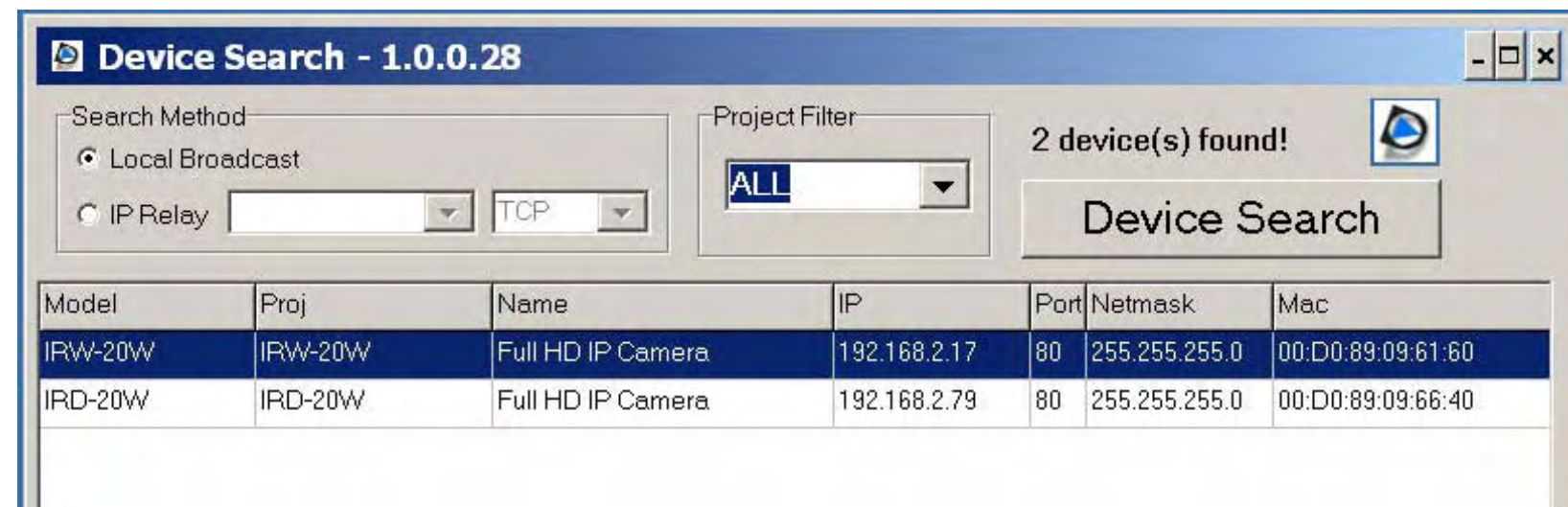


## Full HD Multiple Streaming IP Camera Quick Guide

Ver1.1

### Browser-based Viewer

The main page of the IP Camera user interface is shown as the figure below. Please note that function buttons will vary depending on the camera model.



**Videosec** Home System Streaming **Camera** Logout

**7 Recommended IP Camera Setting**  
(IRW-20W, IRD-20W, ICS-20W, ICS-50W)

Auto Mode  
 Auto Iris  
 Min Shutter Speed 1/25  
 Auto Shutter  
 Min Shutter Speed 1/25

White Balance **ATW**

Picture Adjustment  
 Brightness Default  
 Sharpness Default  
 Contrast Default  
 Saturation Default  
 Hue Default

Backlight Off

Digital Zoom Off

IR Function Smart

WDR Function Hi

Noise Reduction 3DNR Mid

TV System 25 fps( PAL)

2012/02/29 10:04  
 IRD-20W 2012/02/29 10:04:05

Picture Adjustment

Video format  H.264-1  H.264-2  
 x1 x1/2

MJPEG bitrate : middle compression, middle quality  
 H.264-1 bitrate : 4096 kbps, middle compression  
 H.264-2 bitrate : 1024 kbps, high compression, low quality

Use Device Search Software to find IP cameras & NVR , first

**Device Search - 1.0.0.28**

Search Method  
 Local Broadcast  
 IP Relay

Project Filter: ALL

2 device(s) found!

Device Search

Model	Proj	Name	IP	Port	Netmask	Mac
IRW-20W	IRW-20W	Full HD IP Camera	192.168.2.17	80	255.255.255.0	00:D0:89:09:61:60
IRD-20W	IRD-20W	Full HD IP Camera	192.168.2.79	80	255.255.255.0	00:D0:89:09:66:40

**Network Setup**

Device Information  
 Model IRW-20W  
 Project IRW-20W  
 Name Full HD IP Camera  
 MAC 00:D0:89:09:61:60

Network Property  
 DHCP  Static IP  
 IP Address 192.168.2.175  
 Gateway 192.168.2.1  
 Netmask 255.255.255.0  
 DNS 213.163.34.66

Apply Close

Double click to connect

right click to net. setup

Detail Info. Browse Network Setup

Log to **NUUO** as "Santec" :

SNC-3302 or SNC-4302 or SNC-5312IR or SNC-6032 or SNC-6312IRH